

# Carlson School Newsletter

## Dear families and whanau

During the first two weeks of May I undertook a study tour of seven schools in England plus one school in Philadelphia USA, as well as attending two one day conferences.

This trip was carefully prepared over the previous months with particular areas of focus being; student learning, assessment, transition to life beyond school, creative arts therapies, sports, merging schools and new buildings and environments.

The trip was highly successful and a number of professional contacts were made with high performing principals, for long term dialogue. I saw some very well resourced special schools both in terms of staffing and equipment. I believe that here in new Zealand our model of employing our physios, occupational and speech language therapists directly enables not only a higher level of input for our students but also a greater capacity for therapists to support teachers with classroom practice.

I believe that Carlson provides individualised, leading edge curriculum by highly skilled staff. There are future opportunities to be explored with regard to links with universities, assessment which reflects student engagement and using technology more effectively and efficiently to share professional development.

My thanks to our Board of Trustees for supporting this study trip and Catherine Skudder, our deputy principal who led the school in my absence.

Kia kaha

Faye  
Principal

## Students of the Week

### Katie Archer

for always  
joining in  
activities.

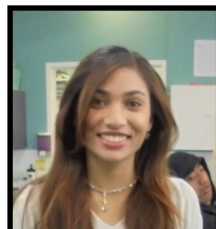


## International University students

Every year we host one or two overseas university students who come to New Zealand on an exchange. We are very fortunate to have in our school two wonderful students from the USA. Casey Tolleson from Tennessee and Ivana Premasinghe from North Carolina. Casey is studying Special Education. Both young women are volunteering 5 days per week in our classrooms. Ivana brings with her an outstanding singing voice and we have been privileged to hear her singing much loved Disney songs.



Casey



Ivana

## Significant school dates for this term...

<b>2nd June:</b>	School Assembly
<b>5th June:</b>	Queens Birthday ( <i>school closed</i> )
<b>8th June:</b>	BOT Meeting
<b>8th June:</b>	Sign Language Taster course
<b>14th June:</b>	Support Staff Day
<b>22nd June:</b>	Special Olympics Football event
<b>24th June</b>	Intensive Interaction PD day
<b>26-28 June:</b>	ERO visit
<b>29th June:</b>	Whole School Event—PLAY
<b>6th July:</b>	BOT Meeting
<b>7th July:</b>	Last day Term 2
<b>24th July:</b>	First Day Term 3
<b>29th September:</b>	Last day Term 3

## School Donations

Thank you for the school donations we have received. While your donation is not compulsory it is an important factor in providing our students with extra resources for learning. Donations are used to add value to your child's learning experiences at Carlson School. The School donation per year is \$100.00 per child,

You can pay at the school office or online 12—3025—0454221—00 please your child's name as the reference. A receipt will be issued to use for tax purposes.

# Room 6

1 June 2017

Room 6 welcomed Fiona this term. We now call ourselves the SIX-MIX MOVERS.

We use a lot of equipment in our room to support our health and learning.

Arwen practises stepping in her walker. Fiona stretches her legs in her walking sling. Junior listens to PODD pathways before choosing letters from his alternative pencil (the alphabet flip chart). Kahn enjoys props brought in for Drama with Danielle. Jenny assists Katie to join in shared reading with the pre-recorded switch. Bev and Ling share a story from the class book shelf. Whatever we do, we have fun together!





# School News

1 June 2017

## BOCCIA Competition

Last week our Waikowhai Pirates visited base school for a Boccia challenge against our Samurai STYLE 1 class . It was a fierce battle with Waikowhai coming out on top. A rematch is definitely on the cards ...





## Winter Camp 2017



**Where:** Mi Camp, Taupo

**When:** From 9am Thursday 06th July to Sunday 9th July 2017 (Term 2 School Holidays)

Winter Camp offers a unique experience for students aged 8 to 12. You will have the opportunity to experience the snow (weather permitting), make new friends and have a go at new activities. Winter Camp is designed for young students who have not been on a Blind Foundation Camp before.

It offers you the opportunity to participate in various activities which may include:

- Fun in the Snow
- Visiting top attractions in Taupo
- Evening activities/games
- Camp fire

### Who can attend?

- Blind and Vision Impaired 8 to 12-year-old members, who have not experienced a Blind Foundation camp before.
- Individuals who have some independence with self-care and able to follow verbal instructions

If your child or student does not meet the above criteria, we do welcome those with additional needs/ medical conditions alongside a parent or caregiver.

For Winter Camp 2017 we can only cater a maximum of 12 participants, this means applications will be done by selection process.

### Cost:

\$100 – this will cover 3 nights' accommodation, travel to and from certain regions within the North Island along with all meals and activities from Thursday to Sunday (can also cover a parent or caregiver to attend if required for additional needs support at no extra cost)

### Travel Arrangements:

Travel to and from Mi Camp, Taupo may be provided by Blind Foundation Staff. All travel arrangements and pick up/drop off locations can be arranged with all successful applicants.

### Please send the completed application form to:

Latesha Sharp Recreation & Community Advisor,  
Blind Foundation, Private Bag 94002, Manukau, Auckland 2240.  
For all enquires or more information please contact Latesha on: 09 281 6503; 027 8081148, email: [sharp@blindfoundation.org.nz](mailto:sharp@blindfoundation.org.nz) Applications for consideration must be received no later than **Friday 9th June 2017**

Tauranga Office 73 Sixteenth Avenue, Tauranga 3122, PO Box 15114, Tauranga 3144  
Phone 0800 243 333 Fax 07 578 8359 Web [blindfoundation.org.nz](http://blindfoundation.org.nz)

Family and friends are invited to join us for the  
Carlson School event

**PLAY**

**10.00-2.00 THURSDAY 29TH JUNE 2017**

**CARLSON SCHOOL & THREE KINGS HALL**

**\$5 DONATION WOULD BE APPRECIATED**

### PROGRAMME FOR THE DAY

**10.00am**

Whole school welcome.

**10.15am-11am**

Music with Olly and Stefan

Dance with Angie (until 11-12.30am)

Hands alive puppet show (10.30am-11am)

Art with Mary (11am-12.30am)

Pet therapy dogs

**11.30am-12.30pm**

Indoor soccer game

Kate from special Olympics to run indoor games.

Rowan from circus in a flash.

Matariki games



**12.30pm-1pm Shared lunch in the school gym**

**1pm to 1.45pm The highland Joker will come in to perform a bubble show in the Hall.**

**Please bring a plate to share on the day.**

## Did you miss out on "Cirkus Quirkus" tickets?



If you missed out we have been given a limited number of spare tickets to the latest Charitable Trust show "Cirkus Quirkus". Please contact the school office if you would like tickets.

**Show Date:** Sunday 11th June 2017

**Show Venue:** Logan Campbell Centre, ASB Showgrounds, Greenlane

**Session Times:** 11.00am, 2.00pm and 5.00pm

As the ticket numbers are limited, please be considerate when ordering them. Each ticket gains admission for one child or adult. The sponsor's name is attached to the back of the ticket and if you could send a note of thanks for their donation it would be appreciated.



## Useful Websites:

**Disability Connect:**

[www.disabilityconnect.org.nz](http://www.disabilityconnect.org.nz)

**Wilson Home Trust:**

[www.wilsonhometrust.org.nz](http://www.wilsonhometrust.org.nz)

**Parent to Parent:**

[www.parenttoparent.org.nz](http://www.parenttoparent.org.nz)

**Raukauri Music Therapy Centre:**

[www.rmtc.org.nz](http://www.rmtc.org.nz)

**Epilepsy Foundation:**

[www.epilepsy.org.nz](http://www.epilepsy.org.nz)

**Spectrum Care:**

[www.spectrumcare.org.nz](http://www.spectrumcare.org.nz)

### School Contact Details

Phone: 09 625 9343

Fax: 09 625 9440

Email: [admin@carlson.school.nz](mailto:admin@carlson.school.nz)

Website: [www.carlson.school.nz](http://www.carlson.school.nz)

Address: 261 St Andrews Rd,  
Three Kings, Auckland 1024

## Disability Connect EDUCATION LEGAL ISSUES

A presentation by Nan Jensen, Quinlaw. Hosted by Disability Connect  
**West Auckland**

Wednesday 7th June 7-9pm  
Hubwest, 27 Corban Ave, Henderson

## INDIVIDUALISED FUNDING (IF) INCLUDING RESPITE

A presentation by Lisa Martin from Disability Connect

### Central Auckland

Monday 12th June, 7-9pm, Disability Connect, 3b Olive Road, Penrose

## LIVING OPTIONS SEMINARS

Presented by Lisa Martin - Disability Connect

### East Auckland

Thursday 1st June, 7-9pm  
Highland Park Community Centre, 47 Aviemore Dr, Highland Park

## PLANNING FOR ADULthood - The Legal Framework around Disability and Disability Rights

TBA

## WORK AND INCOME SUPPORT SEMINARS

TBA

## PARENT SUPPORT GROUP FOR THE INDIAN COMMUNITY

**South Auckland**  
Monday 12th June 6.30-8.30pm  
Clover Park Community House, 16 Israel Avenue, Clover Park

## CULTURALLY DIVERSE PARENT SUPPORT GROUP

TBA

## CHINESE AUTISM SUPPORT GROUP

TBA

## Living Options Seminar

TBA

## Transition Seminars

### Central Auckland

Wednesday 21st June, 12-2pm, Disability Connect, 3b Olive Road, Penrose

### South Auckland

Wednesday 5th July 7-9pm,  
Mt Richmond School, 30 Albion Road, Otahuhu

## Transition Expo

**8 August 2017 – save the date!!!** “The progression from school to community life” Our popular Expo is happening again. Mt Eden War Memorial Hall, 489 Dominion Road, from 9am – 2.00pm

**RSVP is essential:** To book please contact Disability Connect on phone 09 636 0351 or email [admin@disabilityconnect.org.nz](mailto:admin@disabilityconnect.org.nz). Please provide a phone number and email address when booking.



You are warmly invited to a workshop to hear the results of the recent survey undertaken and to share your ideas on ways that the Trust can support children with physical disabilities and their families.

The Trust Committee of management have organised a number of times and venues and you are welcome to attend the one that best suits you.

Date	Time	Place	Venue
Tues May 23rd	10–12	West Auckland	The Hub, 27 Corban Ave Henderson
Wed May 24 <sup>th</sup>	Evening 7-9pm	Central Auckland	Erson Ave, Royal Oak
Thurs 25 <sup>th</sup> May	10-12	South Auckland	Nathan Homestead Manurewa
Sunday 28 <sup>th</sup> May	1-3.pm	Wilson Home	Conference room
Monday 29 <sup>th</sup> May	7-9pm	Albany	Yes Disability Centre 3 William Laurie Place, Albany
Wednesday 31 <sup>st</sup> May	11-1.pm	Hamilton	17 Claudelands Road, Hamilton
Thursday June 1 <sup>st</sup>	11-1.pm	East Auckland	Highland Park community centre
Tuesday 4 <sup>th</sup> June	11-1	Tauranga	CCSDA meeting room 74 Fourteenth Ave Tauranga
Wednesday 5 <sup>th</sup> June	11-1pm	Rotorua	CCSDA 1452B Hinemoa Street, Rotorua
TBA		Whangarei	TBA

Please let us know at [info@wilsonhometrust.org.nz](mailto:info@wilsonhometrust.org.nz) if you plan to attend so that we have enough chairs and coffees.

**Adina Halpern**  
Chair, Committee of Management  
Wilson Home Trust